

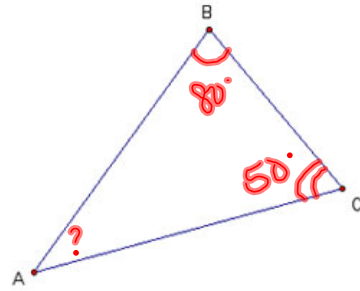
Welcome!! Please grab your ISN and have a seat!
 This will be done ON PAPER today!!!!!! NO CHROMEBOOK!!!!

1) $m\angle ABC = 80^\circ$ $m\angle BCA = 50^\circ$, what is $m\angle CAB$?

$$\begin{array}{r} 80 \\ + 50 \\ \hline 130 \\ 180 \\ - 130 \\ \hline 50 \end{array}$$

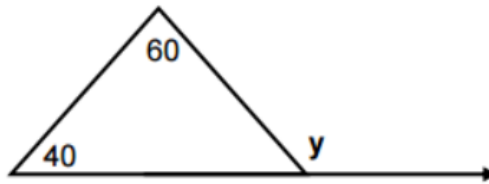
2) The sum of the interior angles of a triangle is

180°



3) Solve for y .

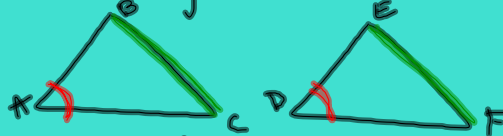
100°



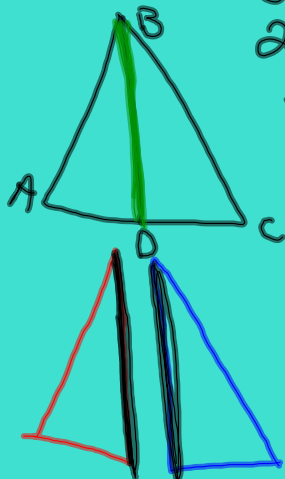
Sep 28-7:49 AM

WWK:

CPCTC- corresponding parts of congruent triangles are congruent.



shared side- side that is part of 2 triangles at the same time. shared sides correspond to themselves and are congruent to themselves



Sep 28-7:59 AM

TOC CPCTC pg 39-40

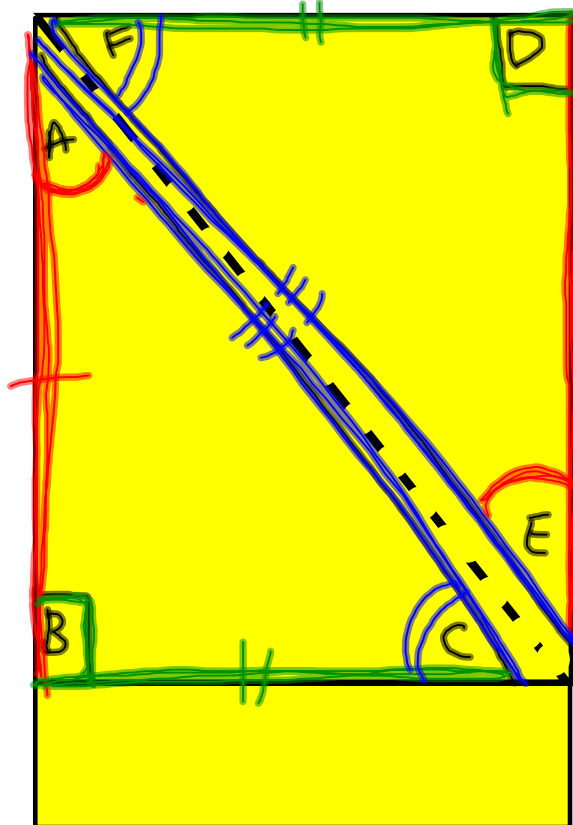
CPCTC 40

Corresponding Parts of Congruent Triangles are Congruent

Need to Know

Sep 28-8:00 AM

TOC CPCTC pg 39-40



$$\begin{aligned} \overline{AB} &\cong \overline{DE} \\ \overline{BC} &\cong \overline{EF} \\ \overline{AC} &\cong \overline{DF} \\ \angle A &\cong \angle D \\ \angle B &\cong \angle E \\ \angle C &\cong \angle F \\ \triangle ABC &\cong \triangle DEF \end{aligned}$$

Sep 28-8:14 AM

Need to Know

* Order of the letters matters!!!



* Shared sides are corresponding and congruent

- $\angle O \cong \angle M$
- $\angle N \cong \angle P$
- $\angle P \cong \angle N$
- $\overline{MN} \cong \overline{OP}$
- $\overline{MP} \cong \overline{NU}$
- $\overline{NP} \cong \overline{NP}$

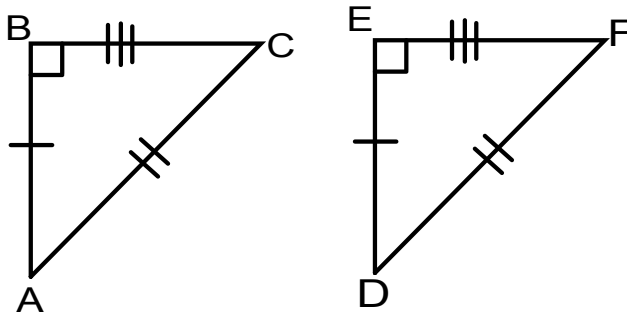


$\Delta NMP \cong \Delta PON$

Sep 28-8:17 AM

Welcome!! Please grab your ISN and have a seat!
 This will be done IN YOUR ISN today!!!!!!! NO
 CHROMEBOOK!!!!!!

Ex 1 (pg 39) Name all 6 corresponding parts.

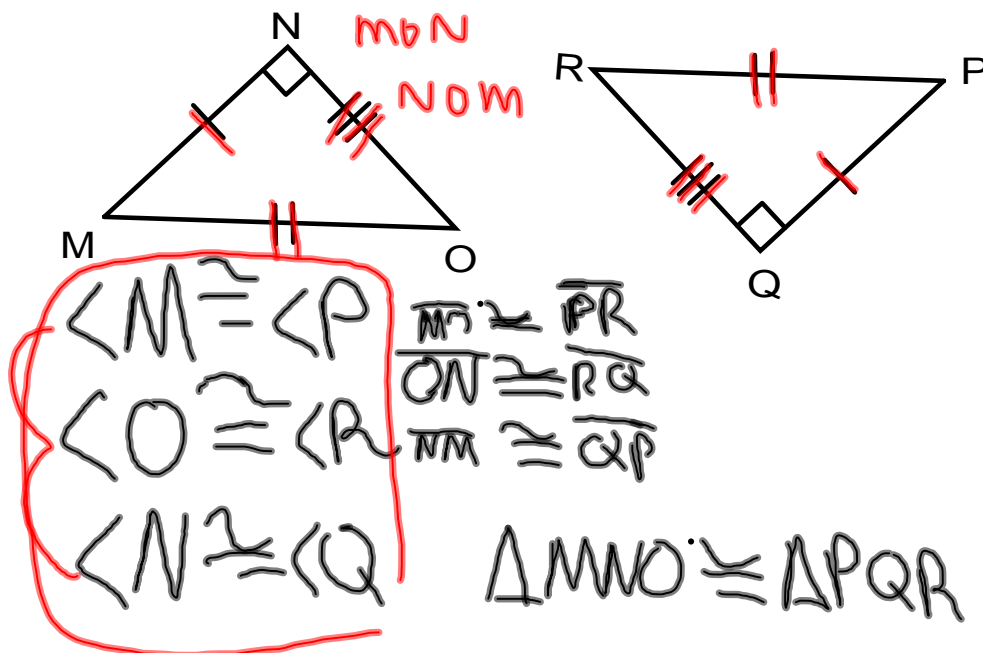


$\Delta CAB \cong \Delta FDE$

- $\angle B \cong \angle E$
- $\angle C \cong \angle F$
- $\angle A \cong \angle D$
- $BC = EF$
- $AC = FD$
- $AB = ED$

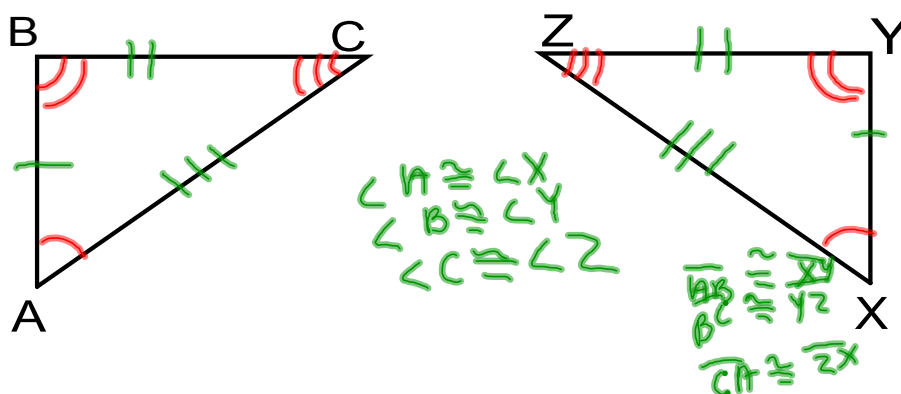
Sep 28-8:18 AM

Ex 2 (pg 41) Write the triangle congruence statement.



Sep 28-8:21 AM

Ex 3 (pg 41) Mark the corresponding parts for $\triangle ABC \cong \triangle XYZ$

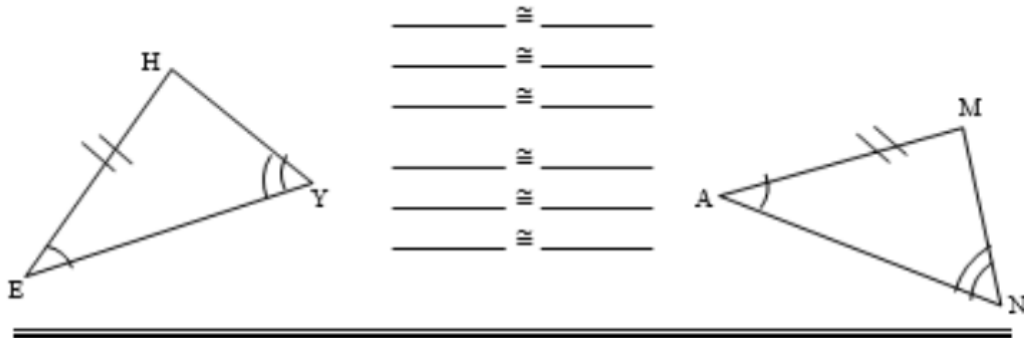


Sep 28-8:24 AM

Homework

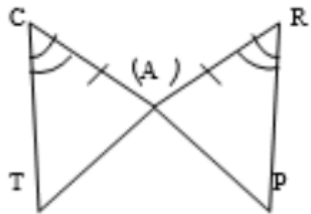
#1: $\triangle HEY$ is congruent to $\triangle MAN$.

What parts of the triangles are congruent by CPCTC?



- _____ \cong _____
- _____ \cong _____
- _____ \cong _____
- _____ \cong _____
- _____ \cong _____
- _____ \cong _____

#2: $\triangle CAT \cong$ _____



- _____ \cong _____
- _____ \cong _____
- _____ \cong _____
- _____ \cong _____
- _____ \cong _____
- _____ \cong _____

Sep 28-8:26 AM

Oct 17-8:17 AM